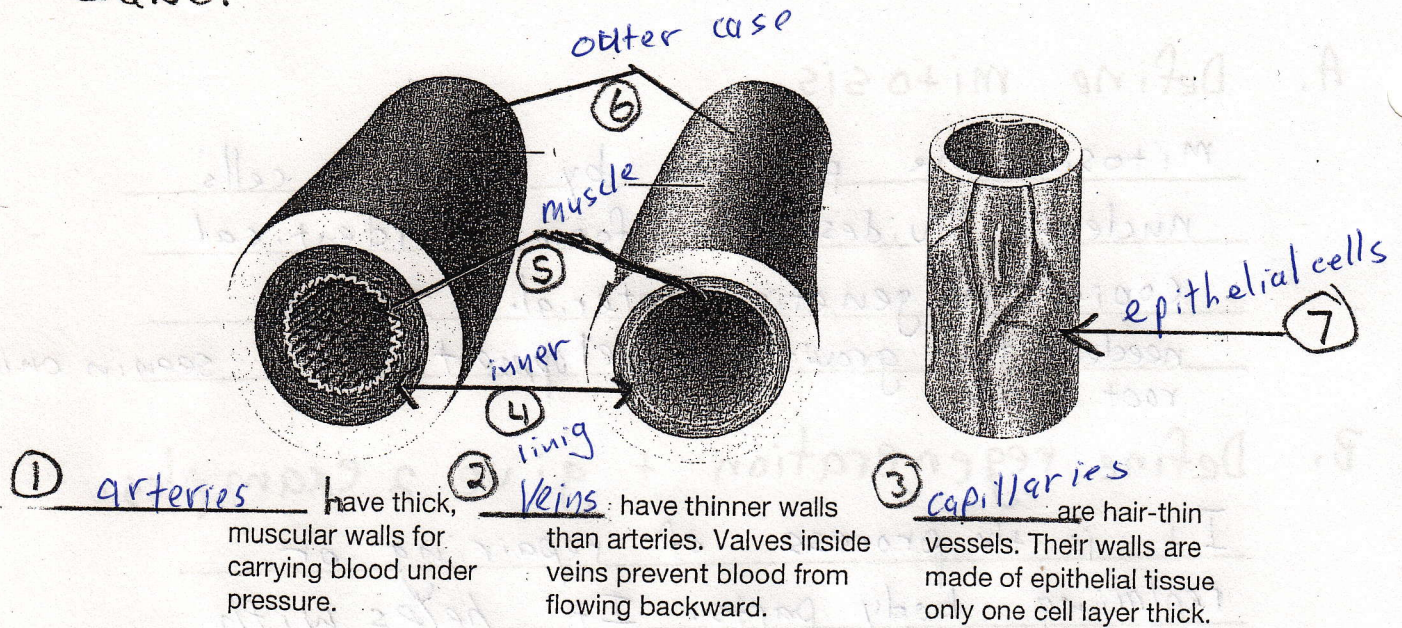


artery, capillary, vein, muscle,
inner lining, epithelial tissue,
outer case

D. Label



E. Explain how O_2 gets to muscle cells.

Mouth \rightarrow lungs \rightarrow capillaries \rightarrow arteries \rightarrow capillaries \rightarrow cells
- transported by blood

F. Explain how CO_2 gets to the outside.
cells \rightarrow capillaries \rightarrow veins \rightarrow capillaries \rightarrow lungs \rightarrow out.
- transported by blood